



**LANKHORST**  
ENGINEERED PRODUCTS

# USER MANUAL

## KLP<sup>®</sup> Coil Transport Cradle

Coil Transport Cradle for Safe and Flexible Transport of Coils

EN - original instructions



## **Original instructions**

This manual has been translated into multiple languages. The original manual is written in US English. All other language versions are translations of the original manual.

## **Copyright**

This document, including its design and content, is protected by copyright and design rights. Unauthorized copying, reproduction, or disclosure of any part of this document to third parties, except for the specific purposes of the project, is prohibited without the prior written consent of the copyright holder.

## **Disclaimer of liability**

The manufacturer cannot be held responsible for personal injury, damage to the Coil Transport Cradle, or property damage caused by incorrect use, foreseeable misuse, or failure to follow the instructions in this manual. This also applies to unauthorized modifications of the Coil Transport Cradle and the use of non-approved parts or tools.

## **Guideline disclaimer**

This guideline is provided for informational purposes only and does not constitute a directive, instruction, or mandatory procedure.

Lankhorst Engineered Products, as manufacturer of the Coil Transport Cradle, does not prescribe or certify any specific lashing method. The selection of lashing straps, including type, strength, quantity, positioning, and pre-tensioning, as well as the overall load securing method, remains the responsibility of the party performing the transport.

Compliance with all applicable laws, regulations, standards, and transport guidelines is the sole responsibility of the carrier, transport company, or other party responsible for the transportation of the coil.

## **Contact details**

For questions about the product or this manual, please contact:

Lankhorst Engineered Products  
Prinsengracht 2  
8607 AD Sneek  
The Netherlands  
Tel. +31 (0)515 487690  
E-mail: [info@coilstorage.com](mailto:info@coilstorage.com)  
Website: [www.coilstorage.com](http://www.coilstorage.com)

## About this document

This document is a guideline describing the use of lashing straps in combination with the Coil Transport Cradle (CTC) during the transportation of steel coils. This guideline is intended for all personnel involved in the preparation, handling and transportation of coils using the Coil Transport Cradle.

Only trained personnel who have thoroughly read and understood this guideline should be involved in the transport preparation and load securing process.

The examples described in this document are based on configurations used during internal testing and TÜV testing procedures. The information presented is intended solely as a guideline to illustrate a possible method of securing a coil positioned on the Coil Transport Cradle to a transport trailer.

This guideline is designed to address most questions that may arise regarding the use of straps in combination with the Coil Transport Cradle. However, there may be areas that require further clarification. In such cases, we kindly ask the purchaser to contact the supplier for assistance. Please refer to the **Contact details**.



## Technical drawings

The technical drawings of the Coil Transport Cradle are available upon request in pdf-format. Please refer to the **Contact details**.

## Regulatory information

The Coil Transport Cradle has been designed and manufactured to meet relevant safety and quality standards for industrial use. The product has been tested by TÜV as part of the verification of load securing configurations used in combination with the Coil Transport Cradle (refer to **Appendix VI**). The Coil Transport Cradle does not require CE marking as it falls outside the scope of the European Union's CE marking directives. As a passive component used within a coil transport and load securing system, it is not classified as machinery or powered equipment. Should further clarification be needed please contact us for additional documentation or guidance.

## Symbols used

	Description
 <b>WARNING</b>	Indicates a hazardous situation which, if not avoided, could result in death or serious injury.
 <b>CAUTION</b>	Indicates a hazardous situation which, if not avoided, could result in minor or moderate injury.
<b>NOTICE</b>	Is used to address practices not related to physical injury.

# TABLE OF CONTENTS

<b>1</b>	<b>The Coil Transport Cradle</b>	<b>5</b>
1.1	Intended use	5
1.2	Reasonably foreseeable unintended use	5
<b>2</b>	<b>Coil Transport Cradle description</b>	<b>6</b>
2.1	Main parts	6
2.2	Main parts description	7
2.3	Coil placement sketch	8
<b>3</b>	<b>Safety</b>	<b>8</b>
3.1	Personal protective equipment	8
3.2	Residual risks	9
3.3	Pre-use inspection	9
<b>4</b>	<b>Load restraining guidelines</b>	<b>10</b>
4.1	Option A: "Eye to the side"	10
4.2	Option B: "Eye to the front" (Gunbarrel)	11
<b>5</b>	<b>Handling of the Coil Transport Cradle</b>	<b>12</b>
5.1	Handling of the coil-cradle assembly	12
5.2	Lifting through the coil eye	12
5.3	Forklift handling	12
5.4	Handling of the coil-cradle assembly	13
5.5	Stacking of empty cradles	13
5.6	Manual handling	13
5.7	Return systems and identification	13
<b>6</b>	<b>Maintenance</b>	<b>14</b>
6.1	Periodic maintenance	14
<b>7</b>	<b>Disposal</b>	<b>15</b>
<b>8</b>	<b>Appendices</b>	<b>15</b>
Appendix I.	General specifications	15
Appendix II.	Operational limits	15
Appendix III.	Standard package contents	15
Appendix IV.	Product drawings and dimensions	16
Appendix V.	Load restraining guidelines	17
Appendix VI.	TÜV certification	18
Appendix VII.	Handling methods	19

# 1 THE COIL TRANSPORT CRADLE

## 1.1 Intended use

The Coil Transport Cradle is a two-piece pallet system designed for the transport of steel coils on flatbed trailers. It is a reusable system that can be applied in return logistics. Although the cradles are designed to withstand the loads encountered during transport on a flatbed trailer, it is essential to prevent any movement of the cradle–coil assembly by applying appropriate lashing methods in combination with anti-slip matting. The cradle is developed to support two operational workflows:

### 1. Stand-alone coil handling

The coil is secured on a set of two Coil Transport Cradles, forming a coil–cradle assembly that can be handled by a forklift without causing damage to the coil. The assembly can be safely placed and transported on a truck, and the cradles are suitable for long-term storage, allowing the coil to remain on the cradles without the need for repositioning.

### 2. Mass coil handling

When both the sender and the recipient are equipped with a coil storage system, such as the KLP® RollStop System, cradles can be pre-positioned on the transport vehicle prior to loading the coil.

### Operational conditions and limitations

- The Coil Transport Cradle is intended for use in flat floor transport of Coils.
- Always make use of sufficient lashing and anti-slip matting to prevent movement.
- The Coil Transport Cradle should only be used for cylindrical objects.
- The system shall be used within a coil diameter range of 900 mm to 1250 mm (35.4 in to 49.2 in).
- Additionally, it must not exceed the maximum load of 10 metric tons (~22,046 lbs) on two CTC's.

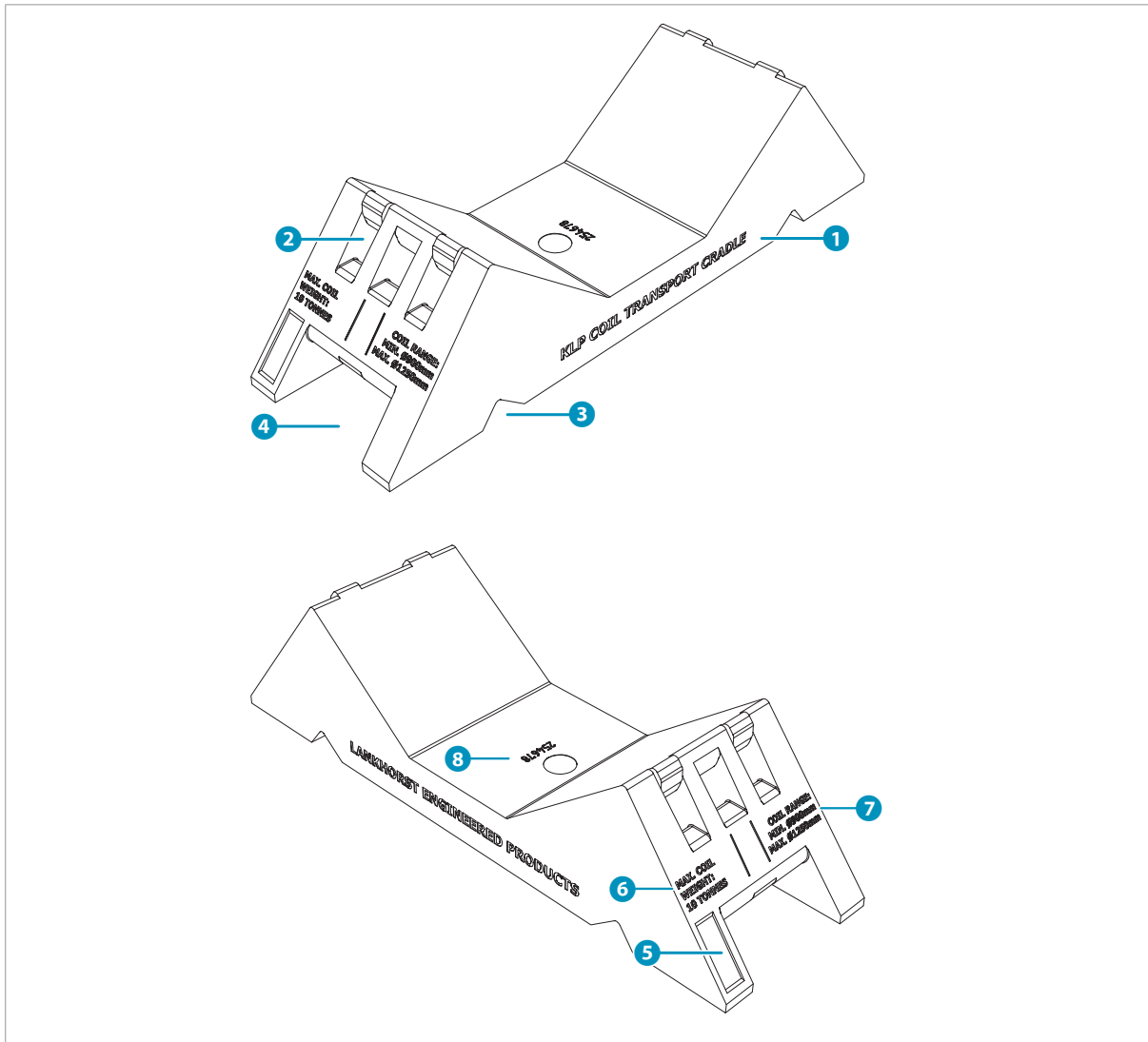
## 1.2 Reasonably foreseeable unintended use

The Coil Transport Cradle is not intended for:

- non-cylindrical objects.
- standing or walking on the system.
- applying dynamic loads exceeding 10 metric tons (~22,046 lbs).

## 2 COIL TRANSPORT CRADLE DESCRIPTION

### 2.1 Main parts



Product detail	Function
1. Product name	Product description
2. Strapping slots	Secure strapping
3. Stacking notch	Stable stacking
4. Forklift opening	Forklift handling
5. RFID tag position	Optional for return system tracking
6. Maximum coil weight	Maximum coil load capacity
7. Coil diameter range	Minimum and maximum coil diameter
8. Article number	Product identification

## 2.2 Main parts description


The Coil Transport Cradle is a single-piece support used for transporting steel coils on flatbed trailers. The Coil Transport Cradle must be used in combination with anti-slip mats and appropriate lashing straps. These components are not supplied by Lankhorst and must be provided separately by the user.

### Coil Transport Cradle

The cradle is manufactured from a recycled polymer compound and designed for repeated use.

Coils are positioned directly onto the cradles, with anti-slip matting applied between the coil and the cradles to increase friction and prevent movement. The cradle geometry supports the coil and restricts rolling during transport. The cradles are used in sets of two to support one coil and ensure even load distribution.

The product is compatible with standard lashing methods using straps. The design includes dedicated openings to guide and position the strapping, enabling secure attachment of the cradles to the coil. For product drawings and dimensions, refer to **Appendix IV**.

	<p><b>Risk of improper use during transport</b></p> <ul style="list-style-type: none"><li>• Incorrect positioning of the coil on the cradle may reduce stability. Ensure the coil is properly seated in the cradle before securing.</li><li>• Always use appropriate strapping methods to secure the coil. Insufficient or incorrect lashing may lead to load shifting during transport.</li><li>• Do not exceed the maximum load capacity of 10 metric tons (~22,046 lbs) per set of two cradles.</li><li>• Ensure correct placement and alignment of both cradles to achieve even load distribution.</li></ul>
---	--

### Anti-slip mats

Anti-slip mats must be used between the coil and the cradles, as well as between the cradles and the truck bed, to increase friction and prevent movement during transport. These mats are not supplied with the Coil Transport Cradle and must be provided separately by the user.

Anti-slip mats are typically made from high-friction rubber or similar elastomer materials and are designed to significantly increase the coefficient of friction between contact surfaces. This reduces the required lashing forces and contributes to safer and more stable transport conditions.

### Lashing straps

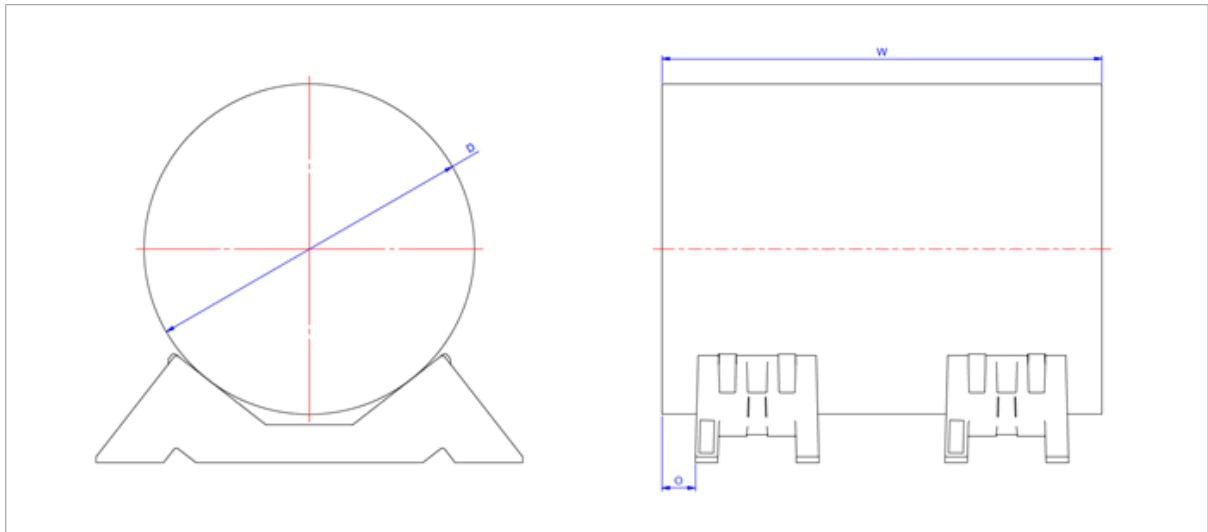
Lashing straps must be used to secure the coil during transport. The straps should be applied correctly and in accordance with applicable standards to ensure safe and stable load securing.

The straps must meet the following minimum performance requirements: a lashing capacity (LC) of at least 2,500 daN (~ 5,500 lbs, EN 12195-2 / WSTDA-T1), a standard tension force (STF) of at least 500 daN, and a maximum elongation of 7%.

Straps with lower elongation (less than 7%) may also be used. However, straps with higher elongation or lower load capacity must not be used. Using straps that meet or exceed these requirements contributes to maintaining sufficient tension during transport and helps prevent load movement.

## 2.3 Coil placement sketch

The cradles should be positioned as close as possible to the edges of the coil to ensure optimal support and stability. When handling the coil–cradle assembly with a forklift, the cradles may be positioned slightly further inwards to facilitate safe and practical lifting (refer to **Appendix VII.1**).






The maximum overhang (**O**) shall not exceed the value determined by the coil width (**W**) minus the coil diameter (**D**), divided by 2.5, as defined by the following formula:

$$O < (W - D) / 2.5$$

# 3 SAFETY

## 3.1 Personal protective equipment

Personnel that interact with the system must equip themselves with the following PPE:

Symbol	Description	When
	Wear protective glasses or goggles.	During handling and use.
	Wear protective gloves.	During handling and use.
	Wear protective shoes.	During handling and use.

## 3.2 Residual risks

While the Coil Transport Cradle has been designed and engineered to minimize risks, some residual risks cannot be fully eliminated. Please carefully read and understand the following:

- **Slippage or Tripping Hazards:** The system may become slippery if wet, contaminated or covered with ice. Ensure that all contact surfaces are clean and dry during use.
- **Impact or Crush Hazards:** Improper installation or overloading can lead to material fatigue or failure. Adhere to all load limits and inspection schedules.
- **Material Degradation:** Over time, components may degrade due to weather or chemicals. Regularly inspect for any signs of damage or wear.
- **Sharp Edges:** Handle steel components with care and wear gloves to avoid injury from sharp edges or burrs.

These risks must be considered by the user, and all safety instructions must be followed. Contact the supplier for further assistance. Please refer to the **Contact details**.

## 3.3 Pre-use inspection

Before use, verify the following to ensure safe handling and correct application of the Coil Transport Cradle system:

### Product

- No visible damage, cracks or deformation
- Contact surfaces are intact

### Configuration

- Two CTC units are used per coil
- Coil is correctly positioned on both cradles

### Trailer

- Floor is flat, clean and free of obstructions
- Lashing points are present and undamaged

### Equipment

- Forklift or crane is suitable for the load

### Load securing

- Cradles are clean and free from ice, snow and contamination
- Anti-slip mats are present
- Lashing straps are available and undamaged
- Edge protection is available

For detailed load securing requirements, refer to **section 4.1** (Option A: “Eye to the side”) and **section 4.2** (Option B: “Eye to the front” Gunbarrel). For forklift and crane handling methods, refer to **Appendix VII**.

# 4 LOAD RESTRAINING GUIDELINES

## NOTICE

The carrier is responsible for adequate load securing.  
Lashing methods must comply with applicable regulations.

### 4.1 Option A: "Eye to the side"

For this configuration, the coil must always be supported by a set of two Coil Transport Cradles (CTC). The use of a single cradle or more than two cradles per coil is not permitted.

#### Positioning and support

The cradles must be correctly positioned to ensure stable support of the coil. Proper alignment is required to distribute the load evenly and prevent instability during handling and transport.

#### Anti-slip matting

The use of anti-slip matting is mandatory to prevent movement of both the coil and the cradles:

- Apply anti-slip mats between the coil and the CTC, and between the CTC and the trailer floor
- The anti-slip matting must cover the full contact surface
- Minimum thickness:  $\geq 6 \text{ mm}$  ( $\approx \frac{1}{4} \text{ in}$ )
- Minimum coefficient of friction:  $\mu \geq 0.6$
- Must comply with VDI 2700 / DIN EN 12195-1

#### Lashing requirements

The coil must be secured using appropriate lashing methods:

- A minimum of 4 lashing straps per coil is required
- Straps must be applied on the same side, pulling in opposite directions
- Minimum lashing capacity (LC): 2,500 daN (EN 12195-2)
- Equivalent working load limit (WLL):  $\sim 5,500 \text{ lbs}$  (WSTDA-T1)
- Standard tension force (STF): 500 daN
- Maximum elongation:  $< 7\%$

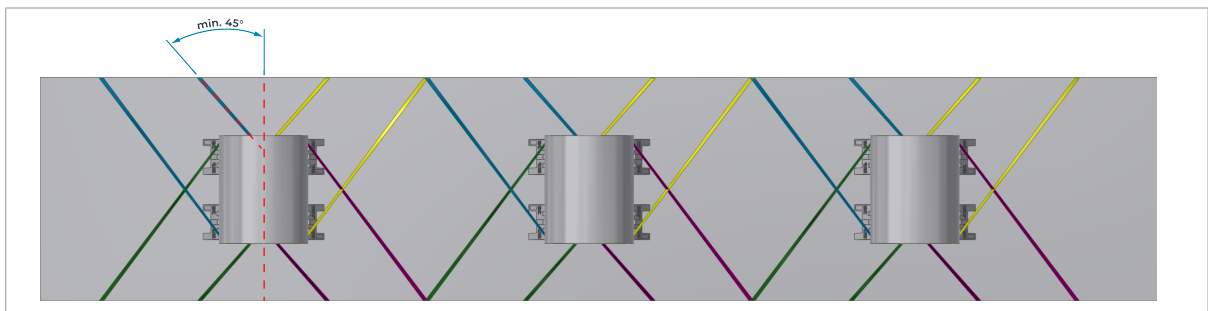
#### Edge protection

Edge protectors must be applied on all sharp edges to prevent damage to the lashing straps.

#### Load limitations

The maximum allowable coil weight is 10 metric tons ( $\sim 22,046 \text{ lbs}$ ) per set of two cradles. This limit must not be exceeded under any circumstances.

#### Lashing configuration (top view)



## 4.2 Option B: "Eye to the front" (Gunbarrel)

For this configuration, the coil must always be supported by a set of two Coil Transport Cradles (CTC). The use of a single cradle or more than two cradles per coil is not permitted.

### Positioning and support

The cradles must be correctly positioned to ensure stable support of the coil. Proper alignment is required to distribute the load evenly and prevent instability during handling and transport.

### Anti-slip matting

The use of anti-slip matting is mandatory to prevent movement of both the coil and the cradles:

- Apply anti-slip mats between the coil and the CTC, and between the CTC and the trailer floor
- The anti-slip matting must cover the full contact surface
- Minimum thickness:  $\geq 6$  mm ( $\approx \frac{1}{4}$  in)
- Minimum coefficient of friction:  $\mu \geq 0.6$
- Must comply with VDI 2700 / DIN EN 12195-1

### Lashing requirements

The coil must be secured using appropriate lashing methods:

- A minimum of 4 lashing straps per coil is required
- Straps must be applied on the same side, pulling in opposite directions
- Minimum lashing capacity (LC): 2,500 daN (EN 12195-2)
- Equivalent working load limit (WLL):  $\sim 5,500$  lbs (WSTDA-T1)
- Standard tension force (STF): 500 daN
- Maximum elongation:  $< 7\%$

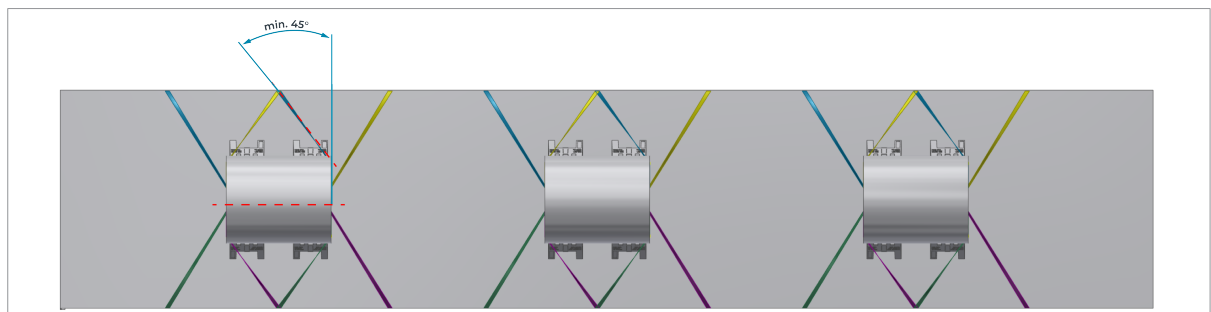
### Edge protection

Edge protectors must be applied on all sharp edges to prevent damage to the lashing straps.

### Load limitations

The maximum allowable coil weight is 10 metric tons ( $\sim 22,046$  lbs) per set of two cradles. This limit must not be exceeded under any circumstances.

### Lashing configuration (top view)



For additional configuration illustrations for Option A and Option B, please refer to **Appendix V**.

# 5 HANDLING OF THE COIL TRANSPORT CRADLE

*This section describes the handling, storage and return logistics aspects of the Coil Transport Cradle (CTC). For product limitations, refer to **section 1.1**. For pre-use checks, refer to **section 3.3**. For detailed load securing requirements, refer to **section 4.1** (Option A: "Eye to the side") and **section 4.2** (Option B: "Eye to the front" / Gunbarrel).*

## 5.1 Handling of the coil-cradle assembly


Before placing a coil onto the cradles, ensure that all pre-use checks have been completed (refer to **section 3.3**). For detailed anti-slip mat requirements, refer to **sections 4.1** and **4.2**.

Using the designated guidance holes, the cradles may be strapped to the coil for handling purposes. These straps are intended only to keep the cradles attached to the coil during handling and positioning. They shall not be regarded as a load securing method and shall not be relied upon to prevent movement of the coil within the cradles during forklift handling or trailer transport.

## 5.2 Lifting through the coil eye

The complete coil-cradle assembly may be lifted through the coil eye using suitable lifting equipment. This method is intended for internal handling and positioning only.

To prevent the cradles from falling during lifting, ensure that they are securely attached to the coil before lifting begins. Plastic, steel or textile strapping may be used for this purpose. When steel strapping is used, care shall be taken to prevent damage to the cradle. If a single strap is applied, it shall be positioned through the central guidance hole. For a crane handling illustration, refer to **Appendix VII.2**.

 <b>WARNING</b>	<b>Risk of falling objects</b> <ul style="list-style-type: none"><li>• When lifting a coil-cradle assembly using equipment such as a C-hook, always ensure that the cradles are securely attached to the coil.</li></ul>
--	--

## 5.3 Forklift handling

The CTC may be handled using a forklift by inserting the forks into the designated forklift openings. The forks shall be positioned correctly to ensure stable and controlled handling. In wet or contaminated conditions, friction between the forks and the cradle may be reduced. This shall be taken into account during handling. For a forklift handling illustration, refer to **Appendix VII.1**.

## 5.4 Storage of coil-cradle assemblies

Coils may be stored on the cradles for longer periods without repositioning, provided that the product is used within the specified application limits.

Recommended storage temperature for coil-cradle assemblies: -20°C to +40°C (-4°F to +104°F).

## 5.5 Stacking of empty cradles

When not in use, empty cradles may be stacked using the integrated stacking features (see **product detail 3** in **2.1 Main parts** and **Appendix III**). Ensure correct alignment during stacking to maintain stability and prevent shifting. Cradles shall only be stacked on a flat and stable surface.


Empty cradles may be stored both indoors and outdoors.

Recommended storage temperature: -20°C to +60°C (-4°F to +140°F).

## 5.6 Manual handling

Handling of the Coil Transport Cradle shall be carried out in accordance with the applicable occupational health and safety regulations of the user.

If manual repositioning is required, the cradle should preferably be moved by dragging rather than lifting, unless suitable lifting assistance is available.

	<p><b>Risk of carrying heavy objects</b></p> <ul style="list-style-type: none"><li>• A single cradle weighs 48 kg (~105.8 lbs). Handling shall be carried out in accordance with applicable occupational health and safety regulations. Where possible, mechanical handling equipment should be used. If manual repositioning is required, the cradle should be moved by dragging rather than lifting.</li></ul>
---	--

## 5.7 Return systems and identification

The Coil Transport Cradle is suitable for use in return systems (see **product detail 5** in **2.1 Main parts**). An RFID tag may be integrated at the designated location to enable identification and tracking of individual units.

This supports the management of return flows and controlled reuse of the product. The cradle is designed for multiple use and can be recycled at the end of its service life.

# 6 MAINTENANCE

<b>⚠ CAUTION</b>	<p><b>Risk of improper functionality of the system</b></p> <p>Failure to maintain or inspect may result in system damage. Regularly inspect system components for damage or deformation, refer to <b>6.1 Periodic maintenance</b>.</p>
------------------	--

## 6.1 Periodic maintenance

Regular maintenance helps extend the Coil Transport Cradle's service life and increases safety during operation. Use the maintenance schedule in this section and the instructions in this chapter to properly maintain the Coil Transport Cradle.


### Lankhorst product

Part	Maintenance activity	Frequency	Instructions
Coil Transport Cradle	<ul style="list-style-type: none"> <li>Check for broken corners or edges.</li> <li>Check for cuts, cracks or tears on the surface.</li> <li>Check for loose material fragments.</li> </ul>	Monthly	Replace the product if a defect is found.

### Additional products

Part	Maintenance activity	Frequency	Instructions
Anti-slip mats	<ul style="list-style-type: none"> <li>Check for wear or smoothing of the surface (reduced friction)</li> <li>Check for contamination (oil, grease, dirt) that may reduce friction</li> <li>Check for cuts, cracks or tears</li> <li>Check for hardening or brittleness of the material</li> <li>Check that the mat maintains full contact with the surface (no deformation)</li> </ul>	Before each use	Replace the product if a defect is found.
Lashing straps	<ul style="list-style-type: none"> <li>Check for cuts, fraying or damage to the webbing</li> <li>Check for damaged or deformed hooks, buckles or tensioning devices</li> <li>Check for signs of chemical damage or heat exposure</li> <li>Check for illegible or missing identification labels (LC/STF)</li> <li>Check for proper functioning of tensioning mechanisms</li> </ul>	Before each use	Replace the product if a defect is found.

# 7 DISPOSAL

	<p>Separate and dispose the components of the system into the applicable waste streams based on their materials, in accordance with local regulations.</p>
---	--

# 8 APPENDICES

## Appendix I. General specifications

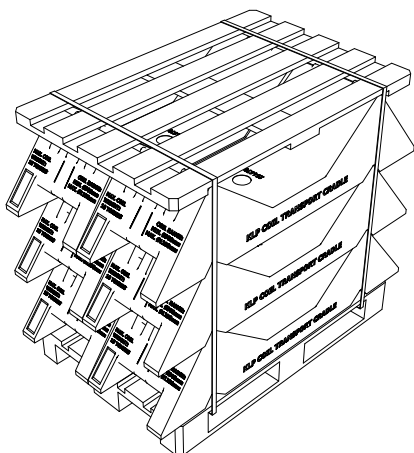
Article number	Product name	Dimensions (w×d×h)		Weight		Material
		mm	ft/in	kg	lbs.	
254678	Coil Transport Cradle (CTC)	393 × 1355 × 346	1' 3 1/2" × 4' 5 3/8" × 1' 1 5/8"	48	~105.8	Polyolefin

## Appendix II. Operational limits

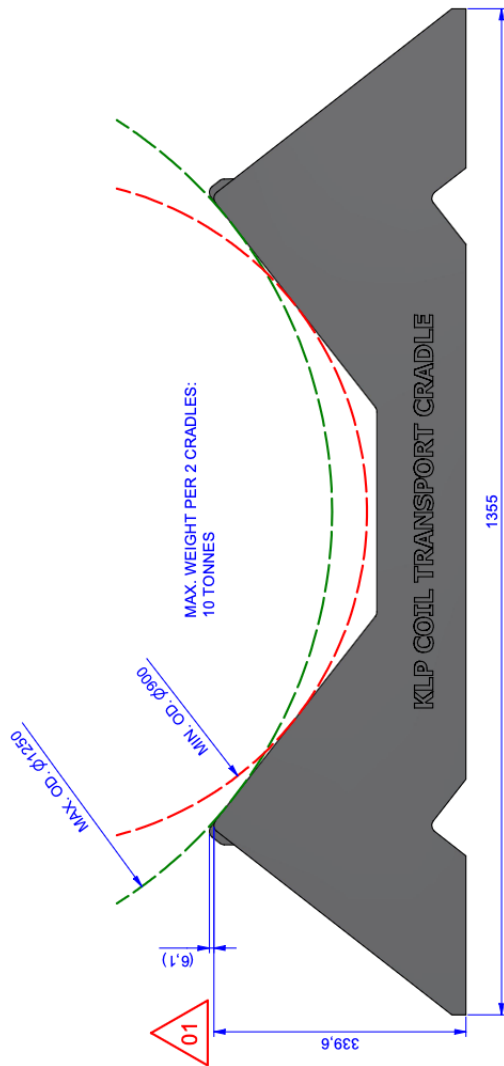
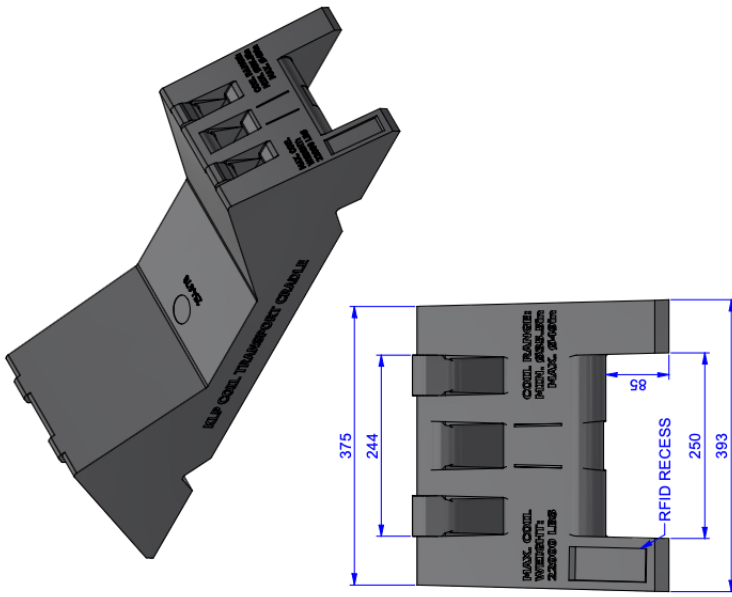
Max. Coil weight		Min. Coil diameter		Max. Coil diameter		Min. Coil width	
tons	lbs	mm	in	mm	in	mm	in
10	~22,046	900	35.4	1250	49.2	700	27.6

## Appendix III. Standard package contents

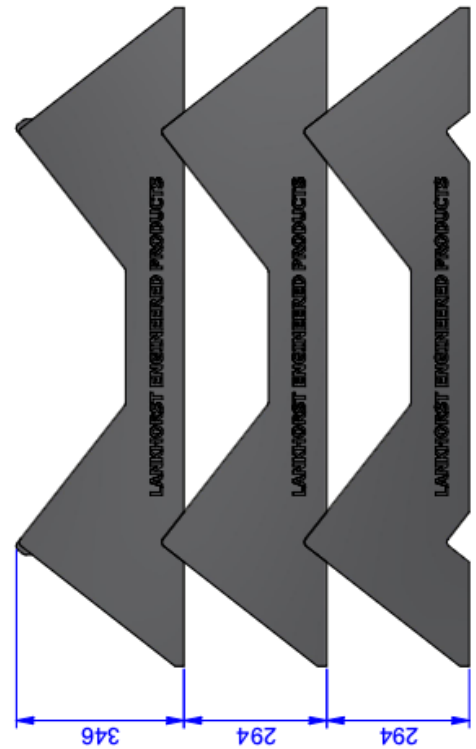
A standard package consists of 6 Coil Transport Cradles.



# Appendix IV. Product drawings and dimensions

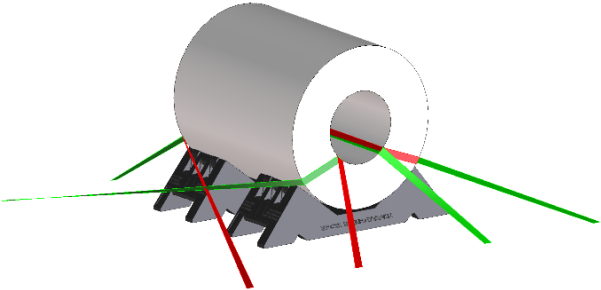
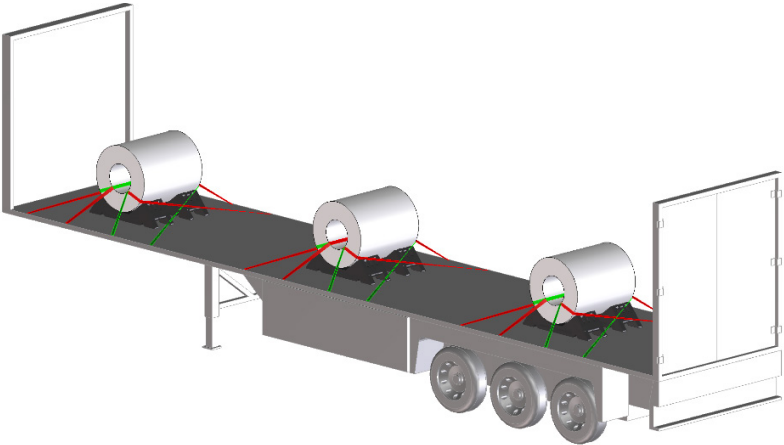


STACKABLE

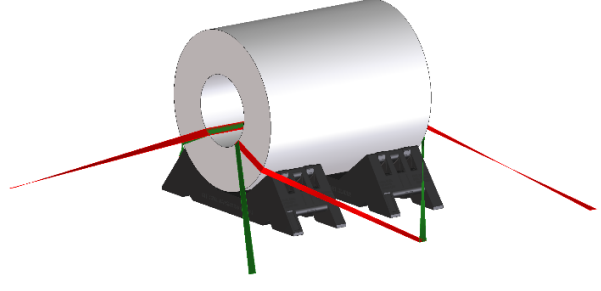
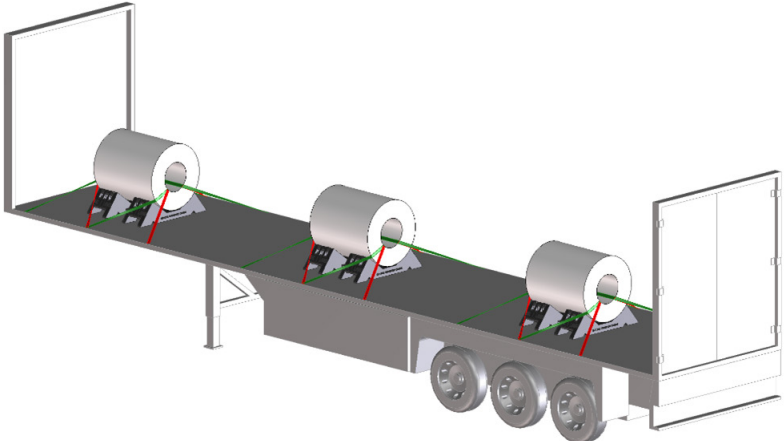


**Appendix V. Load restraining guidelines**

**V.1 Option A: "Eye to the side"**



**V.2 Option B: "Eye to the front" (Gunbarrel)**



# Appendix VI. TÜV certification

## TÜV NORD Mobilität GmbH & Co. KG

### Lashing straps / lashing chains

#### Lashing straps

- Minimum properties of lashing straps LC 2.500 daN,
- S<sub>T</sub> 500 daN, elongation < 7% in accordance with DIN EN 12195-2

and/or

#### Lashing chains

- Minimum 6 mm tested in accordance with DIN EN 12195-3

### 3 Information / conditions for loading

- o Anti-slip mats must always be placed between all coils and the KLP® Coil Transport Cradles.
- o Anti-slip mats must always be placed between the KLP® coil transport cradles and the vehicle floor.

The respective load securing of the coils in the KLP® Coil Transport Cradles is installed by the shipper or driver according to the direction of travel, coil diameter and coil weight. Responsibility for securing the load lies with the respective persons in charge.

### 4 Information about the load

- Coils

#### TÜV NORD Mobilität GmbH & Co. KG

Lankhorst Engineered Products B.V.  
IFM - Institute for Vehicle Technology and Mobility  
Schonscheidstr. 28, DE 45307 Essen  
Hanover office  
Expert team Load Securing  
[ladungssicherung@tuv-nord.de](mailto:ladungssicherung@tuv-nord.de)  
+49 811 998 61274  
Hanover, 27.01.2025



8607 AD Sneek (NL), < Date >

< name of signer >

Martin Keller

## TÜV NORD Mobilität GmbH & Co. KG

### Certificate of tests on load securing and strength for the transport of coils lying on KLP® coil transport cradles 8123105636-PB1-Z1-A3

- VDI 2700 (November 2004) Load securing on road vehicles
- DIN EN 12195-1 (January 2021) Load securing on road vehicles – Safety – Part 1: Calculation of securing forces

### 1 Information on KLP® coil transport cradles

#### Patent pending

#### Manufacturer

Lankhorst Engineered Products B.V.  
Prinsengracht 2  
8607 AD Sneek  
Netherlands  
Email: [info@coilstorage.com](mailto:info@coilstorage.com)  
Tel.: +31 (0) 515 487 690

### 2 Equipment details

#### Rolling direction of the coils

- In and against the direction of travel
- Transverse to the direction of travel
- Maximum coil weight: see type plate
- Maximum coil diameter: see type plate

#### Proven accelerations

- 0.8 g in the direction of travel
- 0.5 g perpendicular to the direction of travel
- 0.5 g against the direction of travel

Two (2) KLP® coil transport cradles for one (1) coil

The following conditions must/should be met:

#### Fixed vehicle floor

#### Recommendation:

- If possible, in accordance with DIN EN 283 Vehicle floor
- 5,460 kg or 7,000 kg depending on coil weight

#### Anti-slip mats:

- At least 6 mm, tested in accordance with VDI 2700
- Sheet 14 or DIN EN 12195-1, coefficient of sliding friction  $\mu \geq 0.6$

#### Edge protectors

#### Lashing points

- Lashing points / multi-point lashing systems tested in accordance with DIN EN 12640, strength 2,000 daN

#### Recommendation:

- When using lashing chains, strength of lashing points 5,000 daN

This certificate is only valid in its entirety. It is based on the associated test report and expires in the event of technical and/or legal changes.

8123105636-PB1-Z1-A3  
Page 2 from 2

This certificate is only valid in its entirety. It is based on the associated test report and expires in the event of technical and/or legal changes.

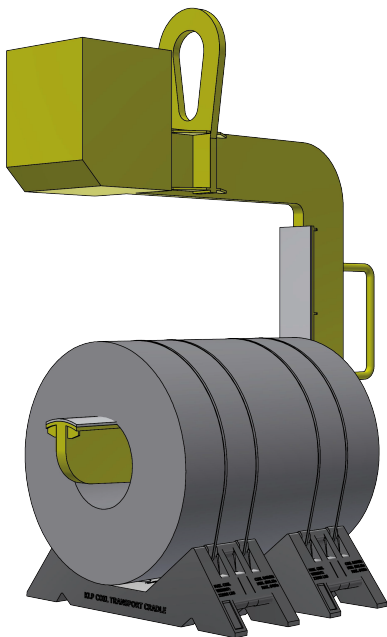
8123105636-PB1-Z1-A3  
Page 1 from 2

## Appendix VII. Handling methods

### VII.1 Forklift handling



### VII.2 Crane handling



EN – original instructions

V01 | 4/21/26